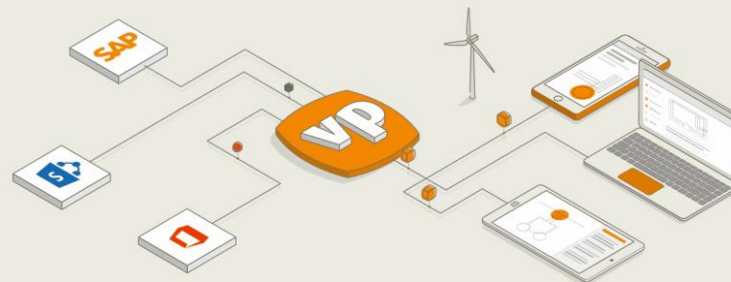




**Viewpoint.ai**

# Viewpoint Operations

See the Bigger Picture



**Peter Brink**, Sales and Marketing VP  
Peter.brink@viewpoint.ai

**Tjidde Boers**, CEO  
Tjidde.Boers@viewpoint.ai

October 2021

# See the bigger picture

*Radial SG believes reliable and accessible information empowers operators, engineers and managers.*

*With Viewport.ai we automatically combine data from existing systems and show the results in context.*

*This enables informed decisions and continuous improvement of information quality.*



## Compliance

Be assured your plants are compliant and control mechanism are in place



## Productivity

Increase productivity with easily accessible information of known quality.



## Safety

Be in control of your safety critical data by keeping it up-to-date, complete and consistent



**Viewpoint.ai**

# About Radial Software Group



- Based in The Netherlands
- Software for the Process Industry
- Global Partner Network
- Global Customer Install base
- ISO9001 certified

**>400**

OPERATIONAL SITES

**95%**

RENEWAL RATE

**> 160 MILLION**

TAG-DOC LINKS CREATED

**>240 MILLION**

DOCUMENTS PROCESSED



**Viewport.ai**

# Industry Leaders using Viewport



# Information Management Challenges

## 1. Information Silos

- How to maintain data integrity?
- How to prevent data duplication?

## 2. Access issues

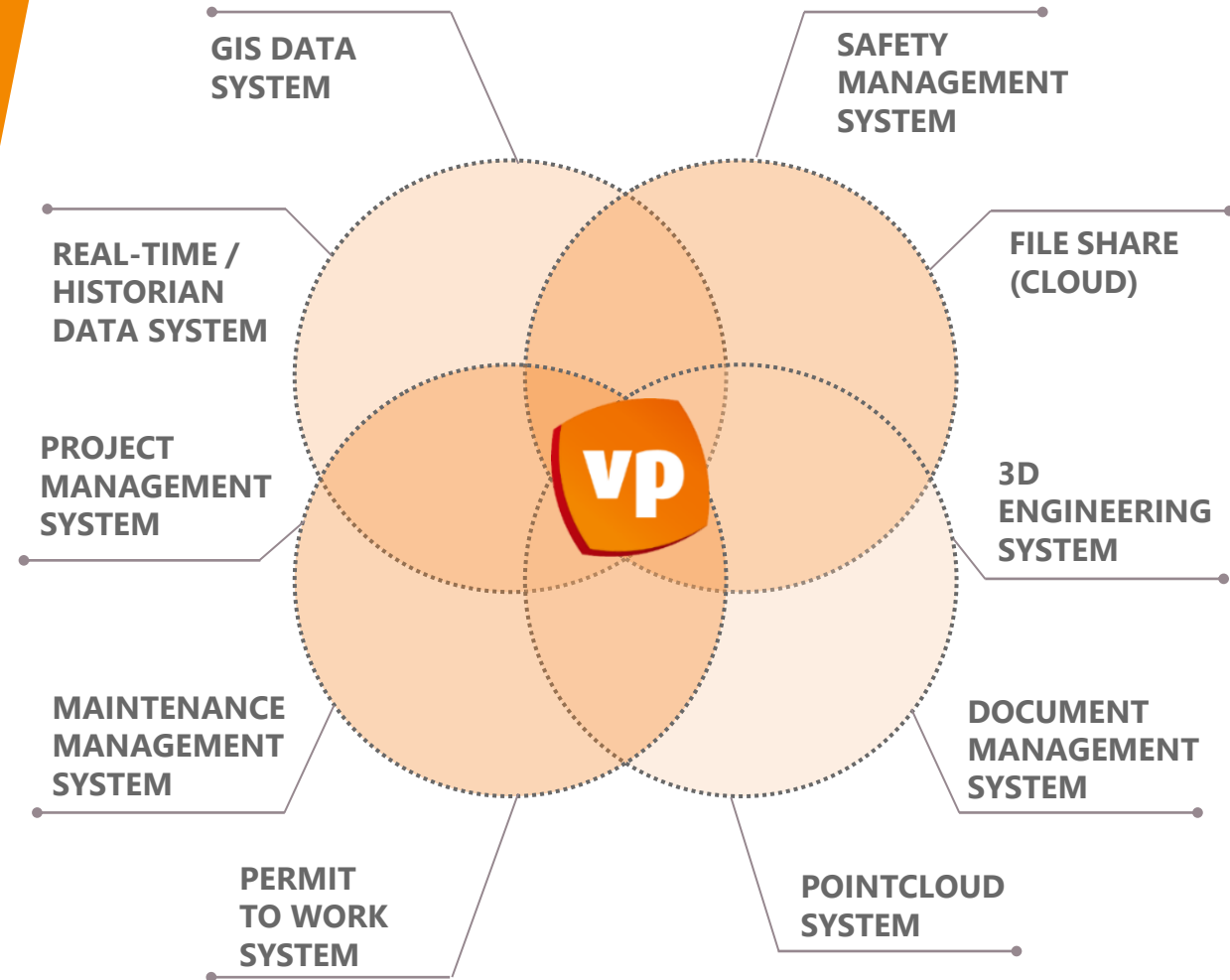
- Do users have access to the systems they need?
- Can users find the information?

## 3. Publication issues

- Can users access data on their (mobile) device?
- Are apps/viewers for various formats available?

*"Knowledge workers spend on average 20-30% of their time searching for (asset related) information."*

Ref. IDC several studies

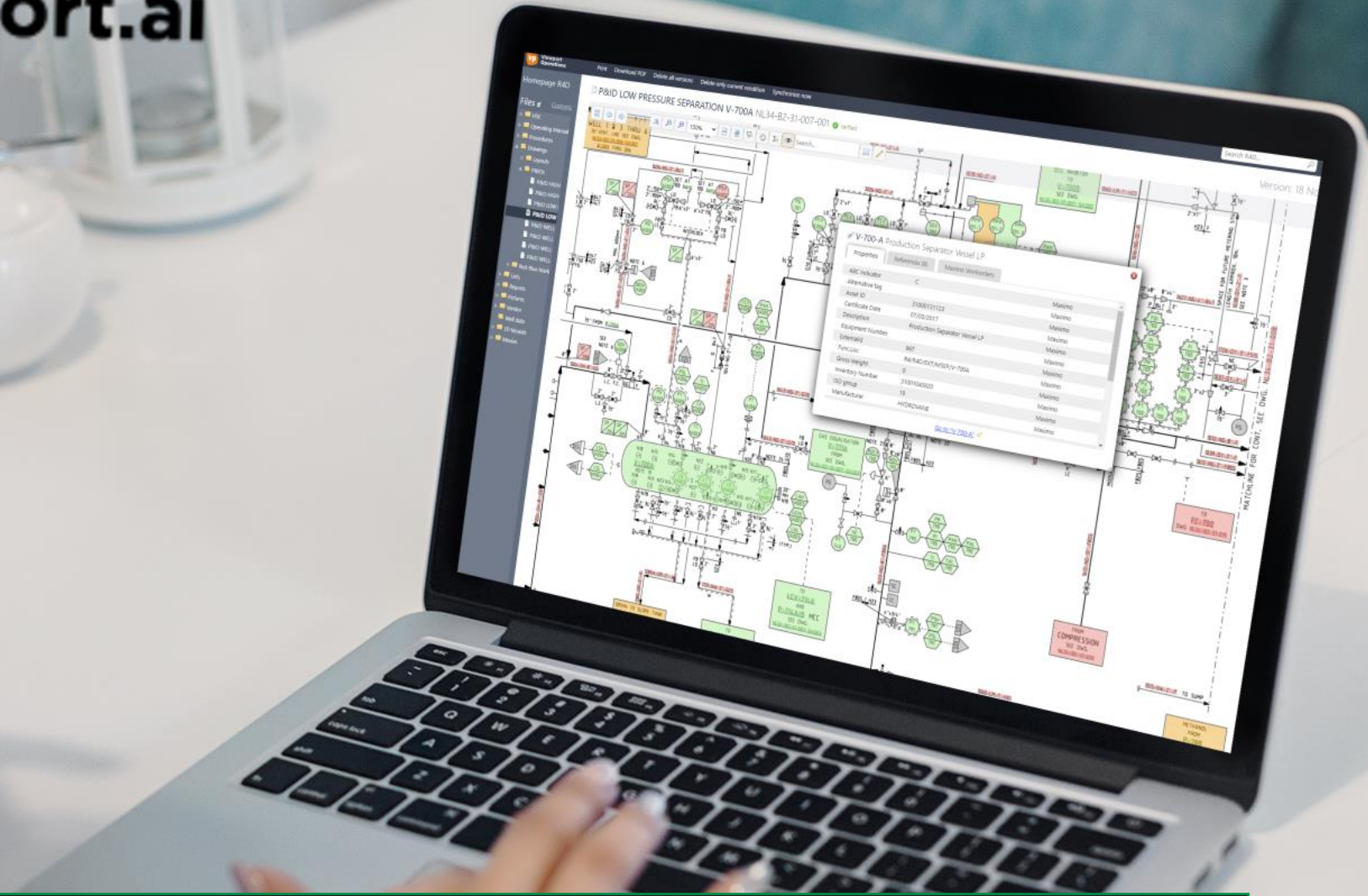




**For some people their organization information position looks like this**

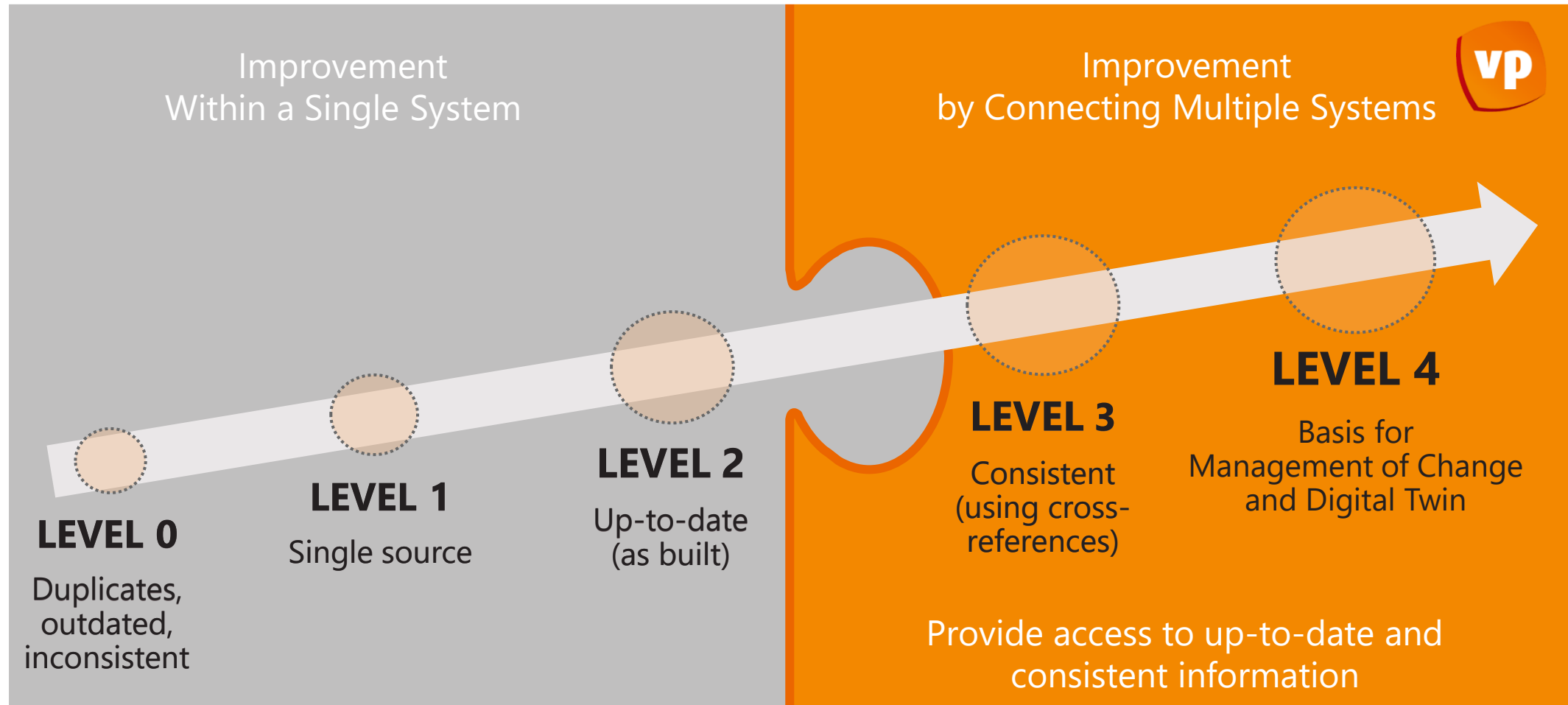


# Viewpoint.ai



**With Viewport.ai on your side it can look like this**

# Viewport Information Maturity Model





# Viewport: Your Knowledge and information source



# DEMO



**Viewpoint.ai**

# From Viewport -> Maximo

Homepage R4D

Files Customize

- ▶ HSE
- ▶ Operating Manual
- ▶ Procedures
- ▶ Drawings
  - ▶ Layouts
  - ▶ P&IDs
    - P&ID HIGH PRES:
    - P&ID HIGH PRES:
    - P&ID LOW PRESS
    - P&ID LOW PRESS
    - P&ID WELL-2 - N
    - P&ID WELL-3 - I**
    - P&ID WELL-4 - N
    - P&ID WELL-5 - N
  - Red-Blue Markups
- ▶ Lists
- ▶ Reports
- ▶ Pictures
- ▶ Vendor
- Well data
- ▶ 3D Models
- ▶ Movies

SDV-102 Shut Down Valve

Properties

ABC Indicator	B	Maximo
Alternative tag		Maximo
Asset ID	31000131123	Maximo
Certificate Date	03/04/2017	Maximo
Description	Shut Down Valve	Maximo
Equipment Number		Maximo
ExternalId	848	Maximo
Func.Loc		Maximo
Gross Weight		Maximo
Inventory Number	31000217827	Maximo
ISO group		Maximo
Manufacturer	HOKE	Maximo
Manufacturer Part Number		Maximo
Manufacturer Serial Number	33916	Maximo
Model	7115G6Y	Maximo
Name	SDV-102	Maximo
Parent ExternalId		Maximo
Size/Dimension		Maximo
Supplier	Valtek	Maximo
Tag	SDV-102	Maximo
Type		Maximo

Inspect: Shut Down Valve

Status: Waiting to be scheduled  
 Type: INSP  
 WO num: 1565  
 WO id: 133624  
 Asset number: 31000217827  
 Site id: VIEWPORT  
 Location: R4D/SDV-102

[Open in Maximo](#)

Inspect: Shut Down Valve

Status: Waiting to be scheduled  
 Type: INSP  
 WO num: 2023  
 WO id: 134070  
 Asset number: 31000217827

In folder R4D, contains 0 items, last updated from Maximo show more

References (4)

- ▶ HSE (1)
  - Operating Manual (0)
- ▶ Procedures (2)
- ▶ Drawings (1)
  - Lists (0)
  - Reports (0)
  - Pictures (0)
  - Vendor (0)
  - Well data (0)
  - 3D Models (0)
  - Movies (0)
  - Tag Numbers (0)
  - Other sites (0)

Possible references (0)

QC (0/1)

Tag Numbers

### Homepage R4D

### Files [Customize](#)

- ▶ HSE
- ▶ Operating Manual
- ▶ Procedures
- ▶ Drawings
  - ▶ Layouts
  - ▶ P&IDs
    - ▶ P&ID HIGH PRESSURE
    - ▶ P&ID HIGH PRESSURE
    - ▶ P&ID LOW PRESSURE
    - ▶ P&ID LOW PRESSURE
    - ▶ P&ID WELL-2 - N
    - ▶ **P&ID WELL-3 - N**
    - ▶ P&ID WELL-4 - N
    - ▶ P&ID WELL-5 - N
  - ▶ Red-Blue Markups
- ▶ Lists
- ▶ Reports
- ▶ Pictures
- ▶ Vendor
- ▶ Well data
- ▶ 3D Models
- ▶ Movies

### [Open asset](#) Shut Down Valve

[Open location](#)

#### Properties

ABC Indicator	B	Maximo
Alternative tag		Maximo
Asset ID	31000131123	Maximo
Certificate Date	03/04/2017	Maximo
Description	Shut Down Valve	Maximo
Equipment Number		Maximo
ExternalId	848	Maximo
Func.Loc		Maximo
Gross Weight		Maximo
Inventory Number	31000217827	Maximo
ISO group		Maximo
Manufacturer	HOKE	Maximo
Manufacturer Part Number		Maximo
Manufacturer Serial Number	33916	Maximo
Model	7115G6Y	Maximo
Name	SDV-102	Maximo
Parent ExternalId		Maximo
Size/Dimension		Maximo
Supplier	Valtek	Maximo
Tag	SDV-102	Maximo
Type		Maximo

#### Inspect: Shut Down Valve

Status: Waiting to be scheduled  
 Type: INSP  
 WO num: 1565  
 WO id: 133624  
 Asset number: 31000217827  
 Site id: VIEWPORT  
 Location: R4D/SDV-102

[Open in Maximo](#)

#### Inspect: Shut Down Valve

Status: Waiting to be scheduled  
 Type: INSP  
 WO num: 2023  
 WO id: 134070  
 Asset number: 31000217827

In folder [R4D](#), contains 0 items, last updated from Maximo [show more](#)

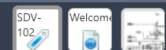
### References (4)

- ▶ HSE (1)
  - Operating Manual (0)
- ▶ Procedures (2)
- ▶ Drawings (1)
  - Lists (0)
  - Reports (0)
  - Pictures (0)
  - Vendor (0)
  - Well data (0)
  - 3D Models (0)
  - Movies (0)
  - Tag Numbers (0)
  - Other sites (0)

Possible references (0)

QC (0/1)

Tag Numbers



Find Work Order 

Find Navigation Item [List View](#) **Work Order** [Plans](#) [Assignments](#) [Viewport](#) [Related Records](#) [Actuals](#) [Safety Plan](#) [Log](#) [Failure Reporting](#) [Specifications](#) [Service Address](#) [Map](#)

Go To Applications

Available Queries

- All Records
- All Bookmarks
- All Work Orders
- X
- My Work Orders

Common Actions

- New Work Order
- Save Work Order
- Clear Changes
- Change Status
- Select Owner
- Take Ownership
- Approve Work Order
- Initiate Work Order
- Complete Work Order
- Close Work Order

More Actions

- Apply SLAs
- View SLAs
- Select/Deselect SLAs
- Change Work Order Options
- Create
- View
- Create Job Plan from Work Plan
- Remove Work Plan
- Select Safety Hazards

Work Order: 1565	<a href="#">Inspect: Shut Down Valve</a>	Site: VIEWPORT	<a href="#">Attachments</a>
Location: R4D/SDV-102 > Shut Down Valve		Class: WORKORDER	Status: WSCH
Asset: 31000217821 > Shut Down Valve		Work Type: INSP	Status Date: 10-12-20 1:54
Configuration Item: >		GL Account: 	Inherit Status Changes? <input checked="" type="checkbox"/>
Parent WO: >		Failure Class: >	Accepts Charges? <input checked="" type="checkbox"/>
Classification: >		Problem Code: 	Is Task? <input type="checkbox"/>
Class Description: >		Storeroom Material Status: >	Under Flow Control? <input type="checkbox"/>
Launch Entry Name: >		Direct Issue Material Status: >	Suspend Flow Control? <input type="checkbox"/>
Repair Facility: >		Work Package Material Status: >	Flow Action: >
Repair Facility Site: _____		Material Status Last Updated: 	Flow Action Assist? <input type="checkbox"/>

<b>Job Details</b>	<b>Asset Details</b>	<b>Priority</b>
--------------------	----------------------	-----------------

Job Plan: >	Asset Up? <input checked="" type="checkbox"/>	Asset/Location Priority: _____
Job Plan Revision #: _____	Warranties Exist? <input type="checkbox"/>	Priority: _____
PM: 1319 >	SLA Applied? <input type="checkbox"/>	Priority Justification: _____
Safety Plan: >	Charge to Store? <input type="checkbox"/>	Risk Assessment: _____
Contract: >	Current Value: _____	

# Homepage R4D

## Files

Customize

- ▶ HSE
- ▶ Operating Manual
- ▶ Procedures
- ▶ Drawings
  - ▶ Layouts
  - ▶ P&IDs
    - ▶ P&ID HIGH PRESSURE
    - ▶ P&ID HIGH PRESSURE
    - ▶ P&ID LOW PRESSURE
    - ▶ P&ID LOW PRESSURE
    - ▶ P&ID WELL-2 - N
    - ▶ **P&ID WELL-3 - N**
    - ▶ P&ID WELL-4 - N
    - ▶ P&ID WELL-5 - N
  - ▶ Red-Blue Markups
- ▶ Lists
- ▶ Reports
- ▶ Pictures
- ▶ Vendor
  - ▶ Well data
  - ▶ 3D Models
  - ▶ Movies

# Shut Down Valve

## Properties

ABC Indicator	B	Maximo
Alternative tag		Maximo
Asset ID	31000131123	Maximo
Certificate Date	03/04/2017	Maximo
Description	Shut Down Valve	Maximo
Equipment Number		Maximo
ExternalId	848	Maximo
Func.Loc		Maximo
Gross Weight		Maximo
Inventory Number	31000217827	Maximo
ISO group		Maximo
Manufacturer	HOKE	Maximo
Manufacturer Part Number		Maximo
Manufacturer Serial Number	33916	Maximo
Model	7115G6Y	Maximo
Name	SDV-102	Maximo
Parent ExternalId		Maximo
Size/Dimension		Maximo
Supplier	Valtek	Maximo
Tag	SDV-102	Maximo
Type		Maximo

### Inspect: Shut Down Valve

Status: Waiting to be scheduled  
 Type: INSP  
 WO num: 1565  
 WO id: 133624  
 Asset number: 31000217827  
 Site id: VIEWPORT  
 Location: R4D/SDV-102

[Open in Maximo](#)

### Inspect: Shut Down Valve

Status: Waiting to be scheduled  
 Type: INSP  
 WO num: 2023  
 WO id: 134070  
 Asset number: 31000217827

In folder R4D, contains 0 items, last updated from Maximo [show more](#)

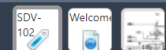
## References (4)

- ▶ HSE (1)
  - Operating Manual (0)
- ▶ Procedures (2)
- ▶ Drawings (1)
  - Lists (0)
  - Reports (0)
  - Pictures (0)
  - Vendor (0)
  - Well data (0)
  - 3D Models (0)
  - Movies (0)
  - Tag Numbers (0)
  - Other sites (0)

Possible references (0)

QC (0/1)

Tag Numbers



Find Location 

Find Navigation Item [List View](#) [Location](#) [Assets](#) [Viewport](#) [History](#) [Safety](#) [Meters](#) [Specifications](#) [Service Address](#) [Map](#)

Go To Applications

Available Queries

- All Records
- All Bookmarks

Common Actions

- New Location
- Save Location
- Clear Changes
- Change Status

More Actions

- View History
- Create
- Open Drilldown
- Associate Systems with Location
- Manage Systems
- Apply Item Assembly Structure
- View/Modify Parents
- View Work Details
- View Contracts
- View Tickets
- Enter Meter Readings
- Manage Meter Reading History
- Reset/Replace Meters
- Associate Users and Custodians
- Associate Services
- Manage Location Collections
- Attachment Library/Folders
- Duplicate Location
- Delete Location

Location: R4D/SDV-102 [Shut Down Valve](#)

Object: LOCATIONS

**Type:** OPERATING

Rotating Item: >

Meter Group: >

Calendar: >

Shift: >

Site: VIEWPORT

ABC Indicator: B

Priority: \_\_\_\_\_

Failure Class: >

GL Account: >

Internal Labor Account: >


[Attachments](#)

Status: OPERATING

Address: \_\_\_\_\_

Bill to Address: >

Ship to Address: >



Address Information

Service Address: >

Formatted Address: \_\_\_\_\_

Street Address: >

City: \_\_\_\_\_

State/Province: >

Ancestor's Address: \_\_\_\_\_

Systems [Filter](#) > < 1 - 1 of 1 >

System	Description	Network?	Address system?
PRIMARY	Primary system	<input type="checkbox"/>	<input type="checkbox"/>

Parent of R4D/SDV-102 in the PRIMARY System [Filter](#) > < 1 - 1 of 1 >

Parent	Description	Item
> R4D	> R4D Main Location	





**Viewpoint.ai**

# From Maximo -> Viewport

Find Location



Find Navigation Item

Go To Applications

Available Queries

All Records

All Bookmarks

Common Actions

+ New Location

Change Status

Create KPI

More Actions

Add Locations to Collections

Open Drilldown

Create

Manage Systems

Attachment Library/Folders

Associate Time Zone

Run Reports

Associate Inspection Form

Advanced Search Save Query Bookmarks

Locations Filter 1 - 20 of 30

Location	Description	Type	Status	ABC Indicator	Object	Site
<a href="#">sdv</a>						=VIEWPORT
<a href="#">R4D/ESDV-1005</a>	Emergency Shutdown Valve	OPERATING	OPERATING	B	LOCATIONS	VIEWPORT
<a href="#">R4D/ESDV-788</a>	Emergency Shutdown Valve	OPERATING	OPERATING	B	LOCATIONS	VIEWPORT
<a href="#">R4D/ESDV-790</a>	Emergency Shutdown Valve	OPERATING	OPERATING	C	LOCATIONS	VIEWPORT
<a href="#">R4D/ESDV-798</a>	Emergency Shutdown Valve	OPERATING	OPERATING	C	LOCATIONS	VIEWPORT
<a href="#">R4D/SDV-1006</a>	Shut Down Valve	OPERATING	OPERATING	C	LOCATIONS	VIEWPORT
<a href="#">R4D/SDV-1007</a>	Shut Down Valve (Hippo)	OPERATING	OPERATING	A	LOCATIONS	VIEWPORT
<a href="#">R4D/SDV-1008</a>	Shut Down Valve	OPERATING	OPERATING	A	LOCATIONS	VIEWPORT
<a href="#">R4D/SDV-101</a>	Shut Down Valve	OPERATING	OPERATING	A	LOCATIONS	VIEWPORT
<a href="#">R4D/SDV-1010</a>	Shut Down Valve (Hippo)	OPERATING	OPERATING	B	LOCATIONS	VIEWPORT
<a href="#">R4D/SDV-1012</a>	Shut Down Valve	OPERATING	OPERATING	B	LOCATIONS	VIEWPORT
<a href="#">R4D/SDV-102</a>	Shut Down Valve	OPERATING	OPERATING	B	LOCATIONS	VIEWPORT
<a href="#">R4D/SDV-103</a>	Shut Down Valve	OPERATING	OPERATING	C	LOCATIONS	VIEWPORT
<a href="#">R4D/SDV-104</a>	Shut Down Valve	OPERATING	OPERATING	C	LOCATIONS	VIEWPORT
<a href="#">R4D/SDV-105</a>	Shut Down Valve	OPERATING	OPERATING	C	LOCATIONS	VIEWPORT
<a href="#">R4D/SDV-107</a>	Shut Down Valve	OPERATING	OPERATING	A	LOCATIONS	VIEWPORT
<a href="#">R4D/SDV-108</a>	Shut Down Valve	OPERATING	OPERATING	B	LOCATIONS	VIEWPORT
<a href="#">R4D/SDV-1A008</a>	Shut Down Valve	OPERATING	OPERATING	C	LOCATIONS	VIEWPORT
<a href="#">R4D/SDV-1B002</a>	Shut Down Valve	OPERATING	OPERATING	A	LOCATIONS	VIEWPORT
<a href="#">R4D/SDV-1B003</a>	Shut Down Valve	OPERATING	OPERATING	A	LOCATIONS	VIEWPORT
<a href="#">R4D/SDV-1C003</a>	Shut Down Valve	OPERATING	OPERATING	A	LOCATIONS	VIEWPORT

Select Records

Find Location

Find Navigation Item < List View Location Assets Viewport History Safety Meters Specifications Service Address Map

Go To Applications

Available Queries

- All Records
- All Bookmarks

Common Actions

- + New Location
- Save Location
- Clear Changes
- Change Status

More Actions

- View History
- Create
- Open Drilldown
- Associate Systems with Location
- Manage Systems
- Apply Item Assembly Structure
- View/Modify Parents
- View Work Details
- View Contracts
- View Tickets
- Enter Meter Readings
- Manage Meter Reading History
- Reset/Replace Meters
- Associate Users and Custodians
- Associate Services
- Manage Location Collections
- Attachment Library/Folders
- Duplicate Location
- Delete Location

Location: R4D/SDV-102 Shut Down Valve Site: VIEWPORT

Viewport Integration for Location R4D/SDV-102

Found these documents mentioning "SDV-102"

Folder	Name	From	Source
HSE	<a href="#">BowTie Loss of Containment</a>	R4D Central Processing Platform	FileSystem <a href="#">Print</a>
P&IDs	<a href="#">P&amp;ID WELL-3</a>	R4D Central Processing Platform	FileSystem <a href="#">Print</a>
Procedures	<a href="#">R4D Start-up after ESD1 rev01</a>	R4D Central Processing Platform	FileSystem <a href="#">Print</a>
Procedures	<a href="#">R4E Start-up after ESD1 rev01</a>	R4D Central Processing Platform	FileSystem <a href="#">Print</a>

Double click to open

Find Location



Find Navigation Item

- List View
- Location
- Assets
- Viewport
- History
- Safety
- Meters
- Specifications
- Service Address
- Map

Go To Applications

Available Queries

All Records

All Bookmarks

Common Actions

New Location

Save Location

Clear Changes

Change Status

More Actions

View History

Create

Open Drilldown

Associate Systems with Location

Manage Systems

Apply Item Assembly Structure

View/Modify Parents

View Work Details

View Contracts

View Tickets

Enter Meter Readings

Manage Meter Reading History

Reset/Replace Meters

Associate Users and Custodians

Associate Services

Manage Location Collections

Attachment Library/Folders

Duplicate Location

Delete Location

Location:

R4D/SDV-102

Shut Down Valve

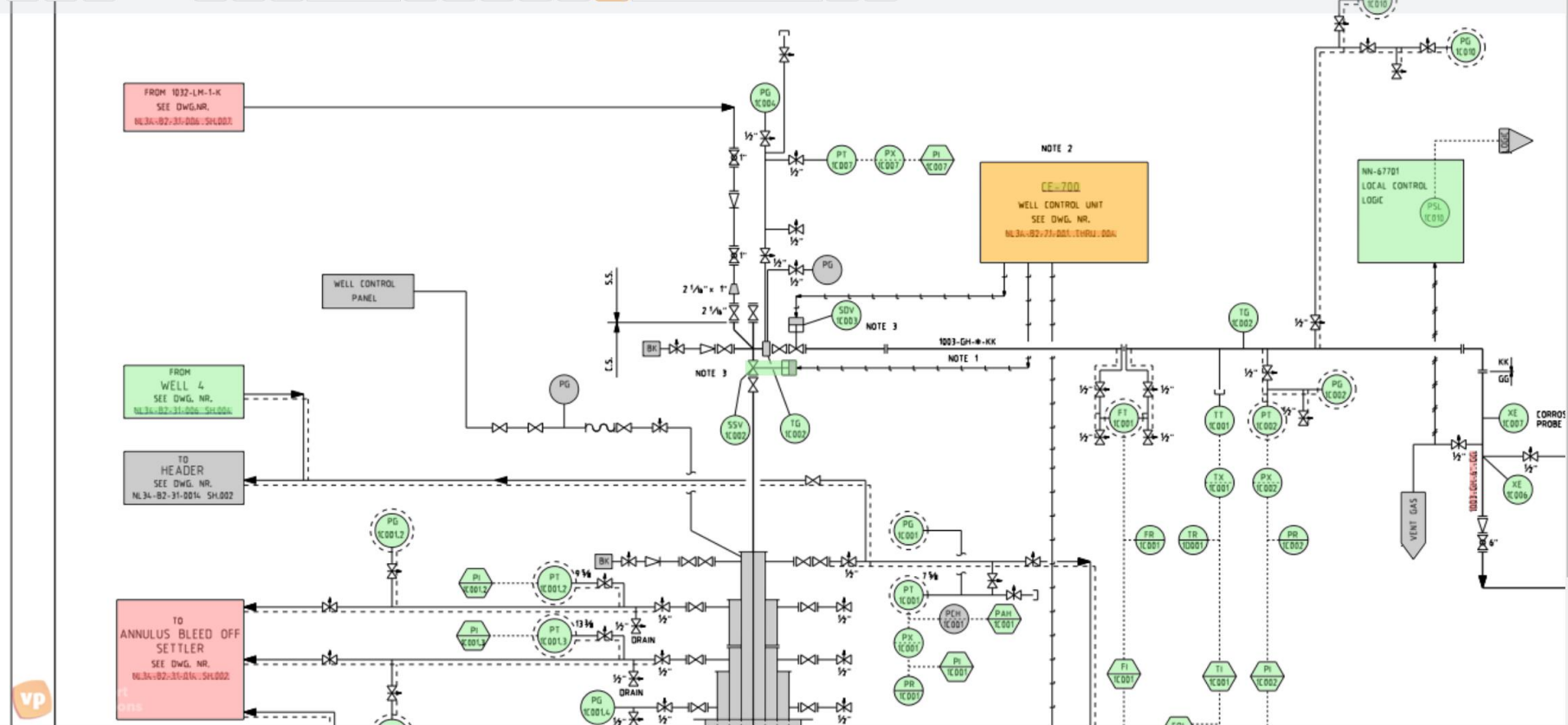
Site:

VIEWPORT

### Viewport Integration for Location R4D/SDV-102

← Back P&ID WELL-3

1 / 1 91.6% Search...



Find Location

Find Navigation Item | List View | Location | Assets | Viewport | History | Safety | Meters | Specifications | Service Address | Map

Go To Applications

Available Queries

- All Records
- All Bookmarks

Common Actions

- New Location
- Save Location
- Clear Changes
- Change Status

More Actions

- View History
- Create
- Open Drilldown
- Associate Systems with Location
- Manage Systems
- Apply Item Assembly Structure
- View/Modify Parents
- View Work Details
- View Contracts
- View Tickets
- Enter Meter Readings
- Manage Meter Reading History
- Reset/Replace Meters
- Associate Users and Custodians
- Associate Services
- Manage Location Collections
- Attachment Library/Folders
- Duplicate Location
- Delete Location

Location: R4D/SDV-102 Shut Down Valve Site: VIEWPORT

Viewport Integration for Location R4D/SDV-102

← Back P&ID WELL-3

1 / 1 91.6% Search...

**SSV-1C002 Sub-Surface Valve**

Properties | References (1) | Maximo Workorders

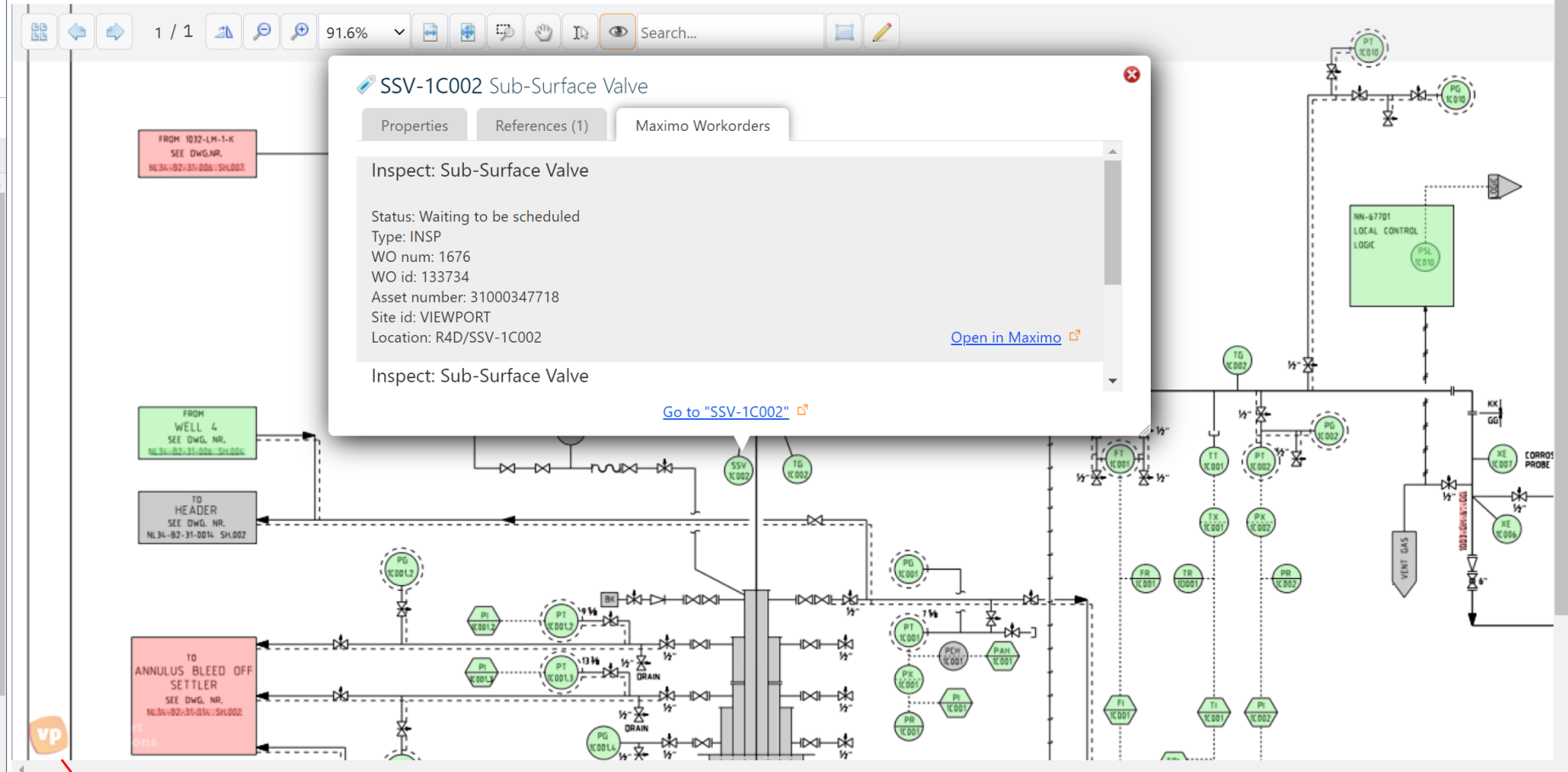
Inspect: Sub-Surface Valve

Status: Waiting to be scheduled  
 Type: INSP  
 WO num: 1676  
 WO id: 133734  
 Asset number: 31000347718  
 Site id: VIEWPORT  
 Location: R4D/SSV-1C002

[Open in Maximo](#)

Inspect: Sub-Surface Valve

[Go to "SSV-1C002"](#)



Double click VP logo jump to Viewport

Homepage R4D

Files

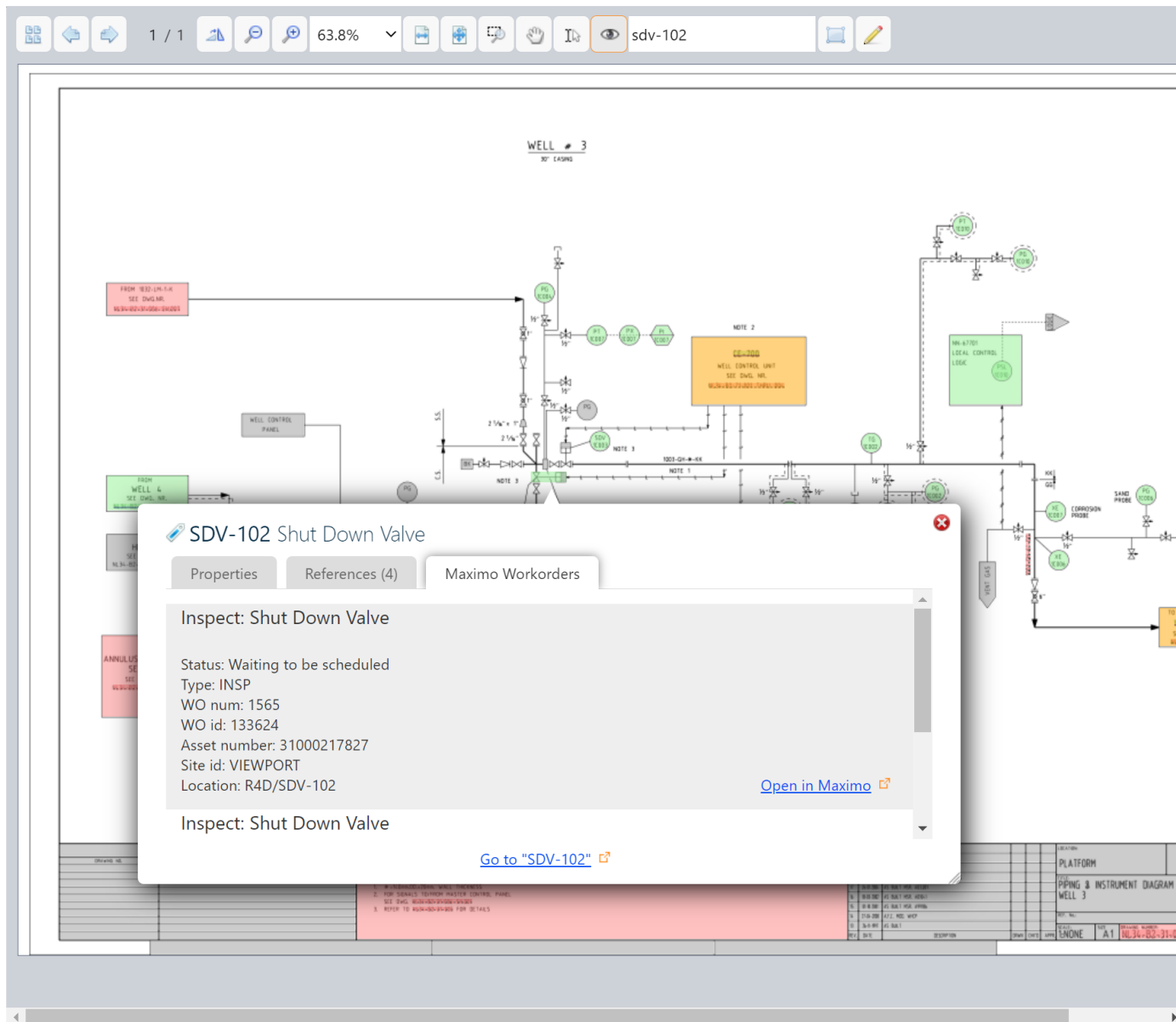
Customize

- HSE
- Operating Manual
- Procedures
- Drawings
  - Layouts
  - P&IDs
    - P&ID HIGH PRES:
    - P&ID HIGH PRES:
    - P&ID LOW PRESS
    - P&ID LOW PRESS
    - P&ID WELL-2 - N
    - P&ID WELL-3 - I**
    - P&ID WELL-4 - N
    - P&ID WELL-5 - N
  - Red-Blue Markups
- Lists
- Reports
- Pictures
- Vendor
- Well data
- 3D Models
- Movies

P&ID WELL-3 NL34-B2-31-006-003

Version: 18 Nov 2020 13:16

References (49)



- HSE (0)
- Operating Manual (1)
- Procedures (0)
- Drawings (2)
- Lists (0)
- Reports (0)
- Pictures (0)
- Vendor (0)
- Well data (0)
- 3D Models (0)
- Movies (0)
- Tag Numbers (46)
- Other sites (0)

Tag Numbers



In folder R4D / Drawings / P&IDs, contains 0 items, last updated 18 Nov 2020 13:16 in FileSystem .PDF show more

- Possible references (11)
- Markup (0)
- QC (0/78)





# Laura the HSE Team Lead

Jeopardy Chem has failed the first pass of a safety audit due to undocumented safety valve maintenance procedure – Jeopardy Chem license to operate is at risk.



Laura

Another week of sleepless nights! Now I'm worried what other safety critical elements are not included in my regular maintenance programs. It takes my team weeks to cross-reference the maintenance procedures with the P&IDs, is there not a faster way?

Viewport.ai finds all cross references automatically, so you can pull-up a report of equipment not known by the maintenance system.  
With Viewport searching is history, finding the future!

Super! Viewport.ai, now we can put **6 FTE** from my team to better use!



### Data Quality Report

Site: Energy (R4D)  
Folder: Drawings/P&IDs  
Tag filter: FuncLoc[Alias^=psv]

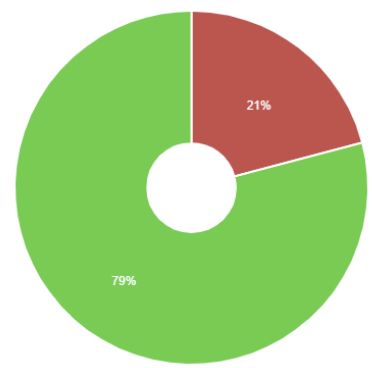
Advanced options

#### Statistics

Documents: 110  
Of which in folder "P&IDs": 9  
Tag numbers: 647  
Of which filtered: 43

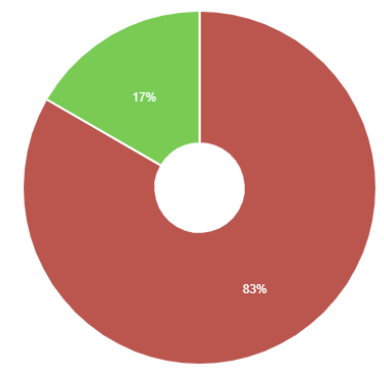
#### P&IDs

How many tags on a P&ID are linked to equipment?



Tag numbers not linked (possible references) (117)  
Tag numbers linked to equipment (references) (443)

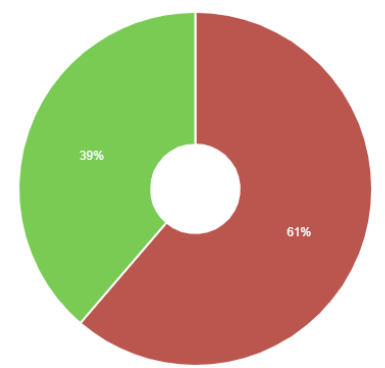
How many **filtered tags** are mentioned on a P&ID?



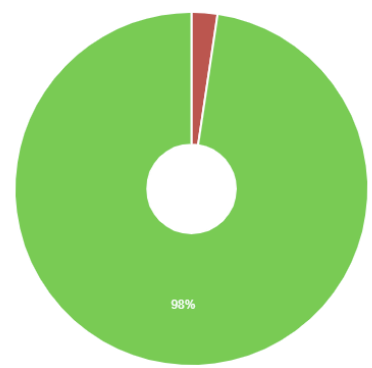
Equipment is not mentioned (35)  
Equipment is mentioned (7)

#### Overall

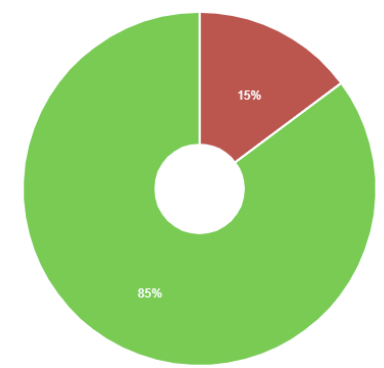
How many tag numbers are linked to equipment?



How many **filtered tags** are mentioned in a document?



How many documents reference any document/equipment?





# High level Solution benefits

## PRODUCTIVITY

- ✓ Creating **foundation** for digital twin, AI/ML models and other next gen apps.
- ✓ 360 degree view better **insights** and faster **decisions**
- ✓ Increased **effectivity** of operators, engineers and their managers
- ✓ Creating nonintrusive vendor agnostic **information portal**

## SAFETY

- ✓ Providing dynamic HSEQ checklists for missing or inconsistent information
- ✓ Minimize downtime, Maximize **safe production** time
- ✓ Reduce **risk** by increasing situational awareness
- ✓ Integrate **barrier** and **risk management** models with operational information
- ✓ Ensure up-to-date **work instructions** and procedures are available and used

## COMPLIANCE

- ✓ **Audit** readiness
- ✓ Direct insight in information critical for "**License to Operate**"

# Thank you!

**For more information contact:**

**Peter Brink**, Sales and Marketing VP  
[Peter.brink@viewport.ai](mailto:Peter.brink@viewport.ai)  
+31 6 3938 8860

**Tjide Boers**, CEO  
[Tjide.Boers@viewport.ai](mailto:Tjide.Boers@viewport.ai)  
+31 6 5589 4628

[www.viewport.ai](http://www.viewport.ai)  
[Viewport@YouTube](#)



**Viewport.ai**